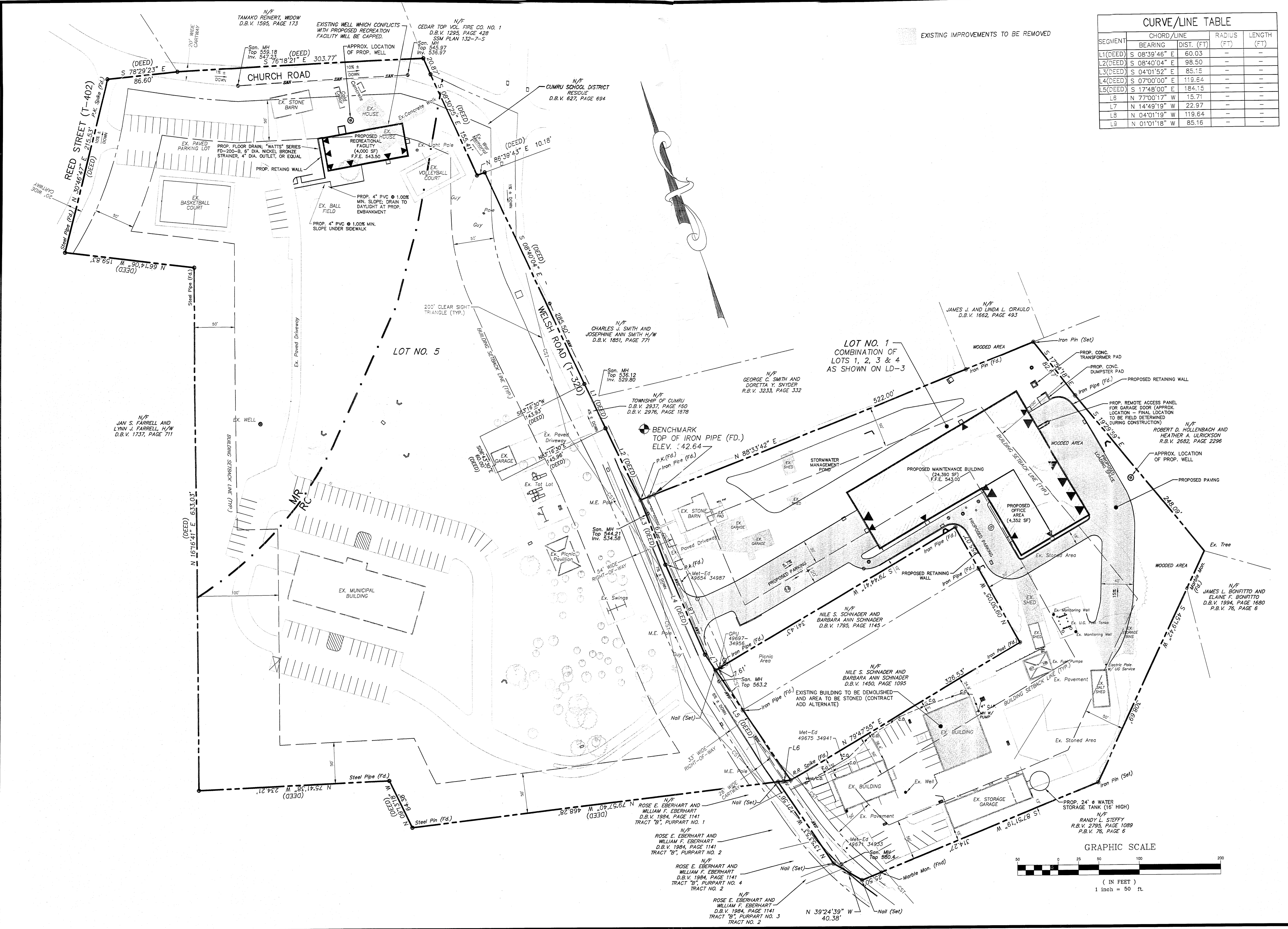
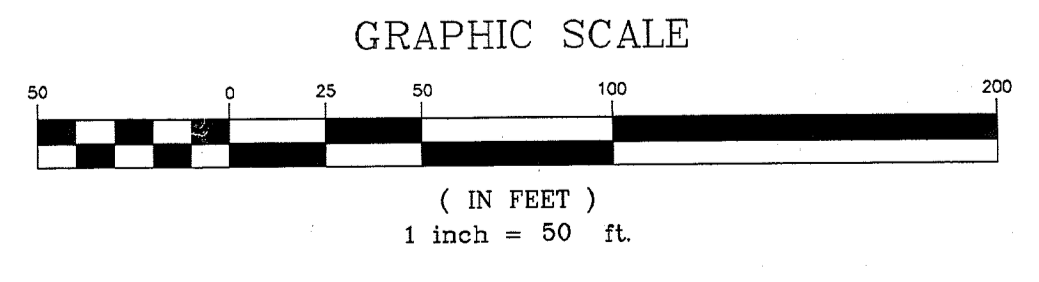


K:\Users\15001\5001\5001\CADD\1500839-LD1.dwg 10/23/2003 02:17:51 PM EDT



CURVE/LINE TABLE				
SEGMENT	BEARING	DIST. (FT)	RADIUS (FT)	LENGTH (FT)
L1(DEED)	S 08°39'46" E	60.03	-	-
L2(DEED)	S 08°40'04" E	98.50	-	-
L3(DEED)	S 04°01'52" E	85.15	-	-
L4(DEED)	S 07°00'00" E	119.64	-	-
L5(DEED)	S 17°48'00" E	184.15	-	-
L6	N 77°00'17" W	15.71	-	-
L7	N 14°49'19" W	22.97	-	-
L8	N 04°01'19" W	119.64	-	-
L9	N 01°01'18" W	85.16	-	-



LSC
 DESIGN
 1110 East
 Princess Street
 York, PA 17403
 717.845.8383
 Environmental
 Architecture • Engineering
 Planning • Surveying
 Interiors • Landscape

KINSLEY
 CONSTRUCTION
 BERKS COUNTY, PA

CUMRU TOWNSHIP
 LAND DEVELOPMENT/REVERSE
 SUBDIVISION PLAN
 MAINTENANCE BUILDING
 AND RECREATIONAL FACILITY

NO.	DATE	REVISION	BY
5	10/23/2003	GENERAL REVISIONS	DMD
4	10/08/2003	REVISED PER TWP. ENGINEER'S REVIEW LETTER & ISSUED FOR CONSTRUCTION	DMD
3	9/15/2003	REVISED PER TWP. ENGINEER'S REVIEW	DMD
2	8/8/2003	ISSUED FOR PRICING	DMD
1	7/24/2003	ISSUED FOR CLIENT REVIEW	DMD

CHECKED BY	DRAWN BY	SCALE	DATE	FILE
	DMD	1" = 50'	6/12/2003	1500-839

LD-5
 SHEET NUMBER
 1500839-LD

© 2003, LSC Design, Inc./Kinsley Construction, Inc. All Rights Reserved. These plans are the property of LSC Design, Inc./Kinsley Construction, Inc. Any use or reproduction of these plans, in whole or in part, without the written permission of LSC Design, Inc./Kinsley Construction, Inc. is forbidden.