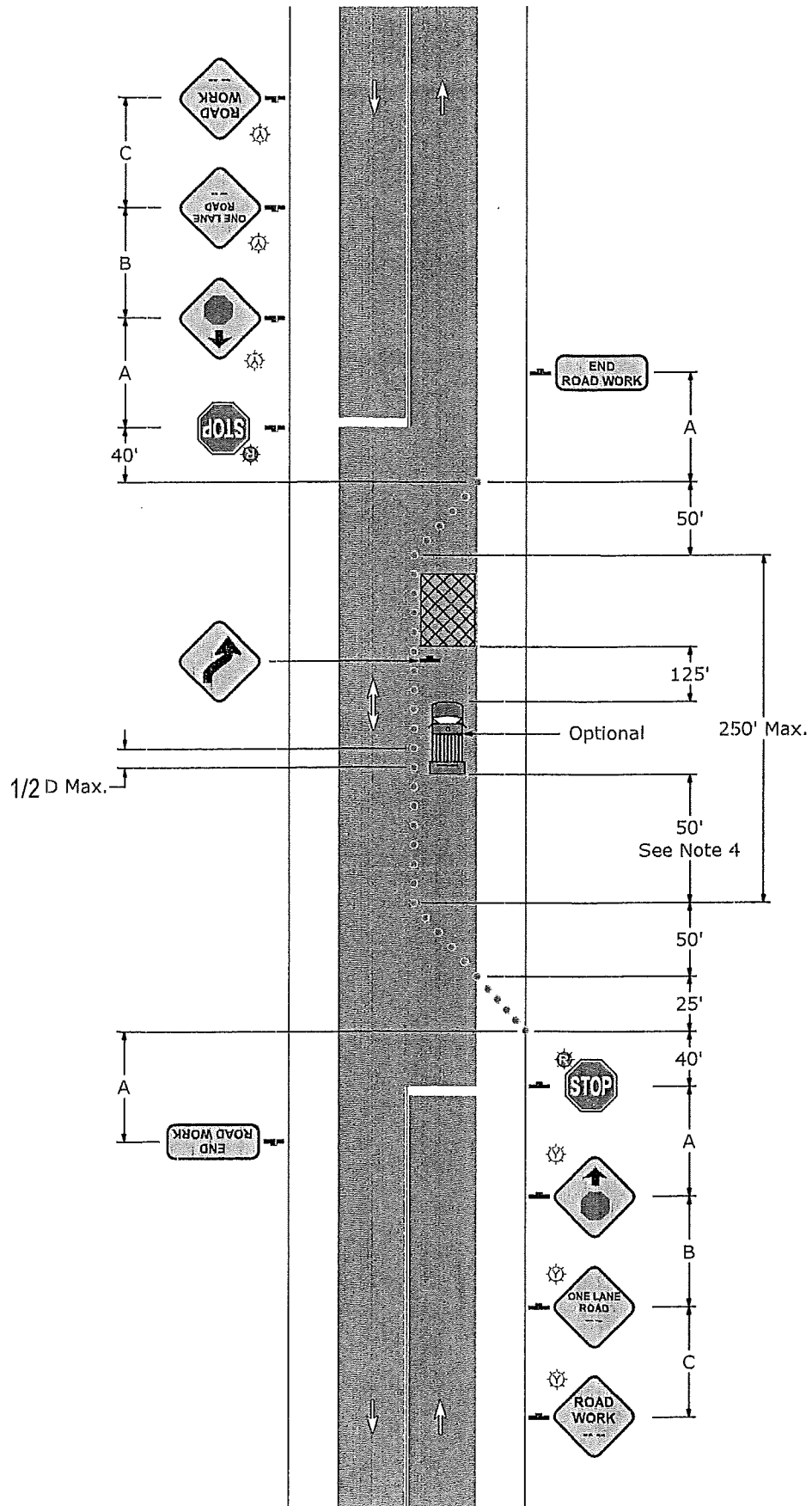
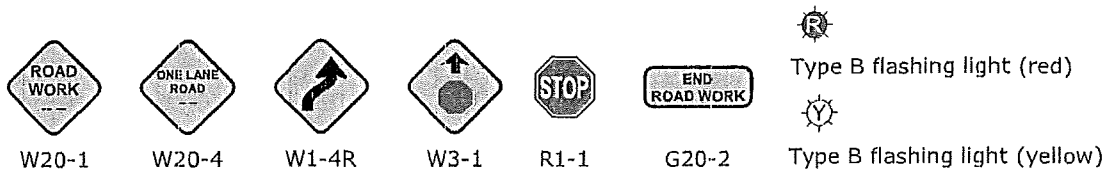


MODIFIED PATA 205 (Old PATA 26c)
 Self-Regulating Stop Sign-Controlled Lane Closure



MODIFIED PATA 205 (Old PATA 26c) - Notes

1. This figure applies when all of the following conditions are satisfied:
 - a. Sight distance between the Stop (R1-1) signs is unobstructed.
2. Attach red Type B flashing lights on stop signs and yellow Type B on warning signs as shown.
3. When a shadow vehicle is not used, 50' is measured from end of taper to beginning of work space.
4. Refer to PATA 008 for reverse curve/turn signing.
5. Refer to PATA 010 for additional information regarding the temporary portable sign posts for the Stop (R1-1) signs.



Sign Spacing Chart

Distance and Spacing Quick Reference Chart

Condition	Distance				Speed MPH	W Feet	L Feet	1/2L Feet	1/3L Feet	Min. Channelizing Devices Per Taper Type (Length)				D Feet	E Feet	H Feet
	A	B	C	F						L	1/2L	1/3L	50'			
	Feet	Feet	Feet	Feet						Feet	Feet	Feet	Feet			

Rural	500	500	500	500
-------	-----	-----	-----	-----

When multiple distance plaques are used on advance warning signs, they shall all be of the same series type.

Example: either all "AHEAD" or XXX FEET.

45	10	450	225	150	11	6	6	6	90	360	150
	11	495	250	165	12	7					
	12	540	270	180	13	7					

Taper Length Formulas

S	L
---	---

45 MPH or more	L = WS
----------------	--------

S = Regulatory Speed Limit
 W = Width of Offset
 L = Length

Note: Channelizing devices used in taper shall be equally spaced at 1/2 D Max.